



**Setting progressive benchmarks...**



# About Essar Foundation



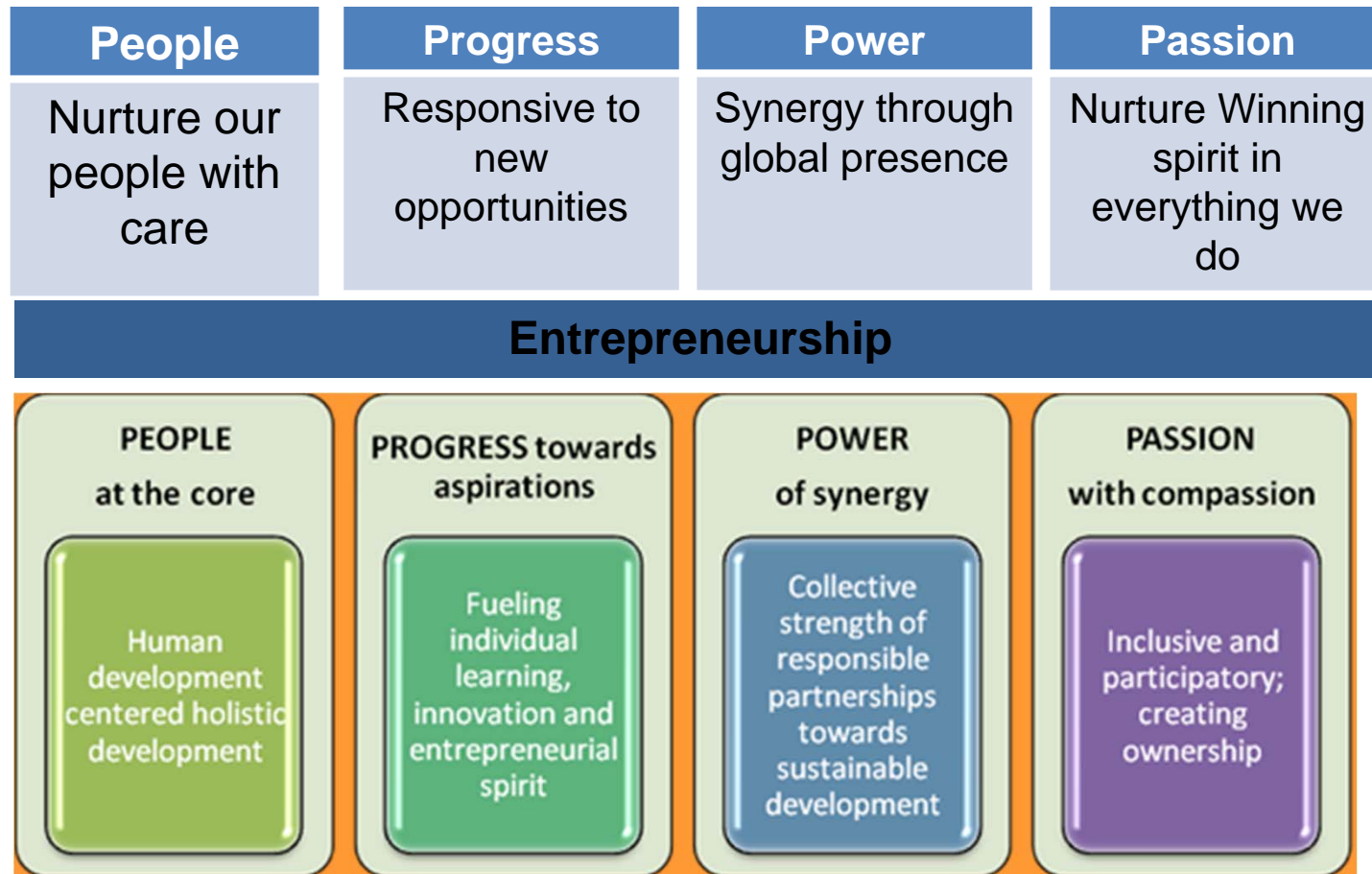
- Essar Foundation is the CSR arm of Essar committed to making positive impact in communities across more **than 500 villages** of India.
- The Foundation facilitates development initiatives in line with provisions under the **Companies Act, 2013**.
- Aligns its vision with Essar's philosophy of **4Ps** – PEOPLE at the core, PROGRESS towards aspirations, POWER of synergy, and PASSION with compassion.
- Works in **8 states** and **14 districts** of India including very **remote locations**, under challenging circumstances and adverse local conditions.

State	Districts	Business Associated
Gujarat	Jamnagar, Surat	Steel, Ports, Power, Logistics, Oil
Madhya Pradesh	Singrauli	Power, Coal
Odisha	Jagatsinghpur, Keonjhar, Malkangiri	Steel, Ports
Chhattisgarh	Dantewada, Sukma	Steel
Jharkhand	Latehar and Tokisud	Power
Maharashtra	Pune, Mumbai	Steel
West Bengal	Durgapur	Power, Projects
Andhra Pradesh	Vishakhapatnam	Steel

# Our Vision

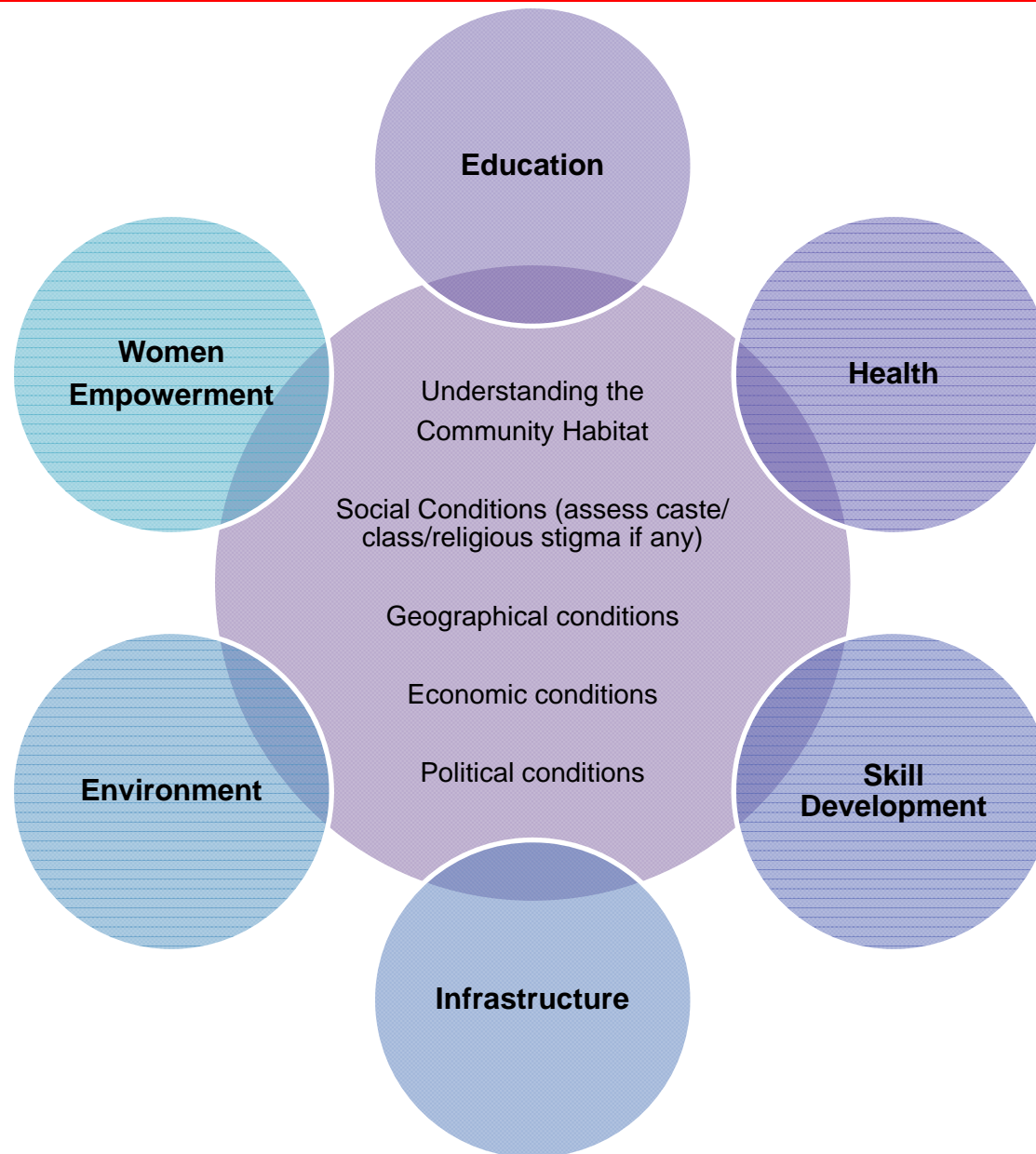
---

To be a respected global entrepreneur,  
through the power of positive action



# Areas of Interventions

---



# Business and Shared Value...Perspective

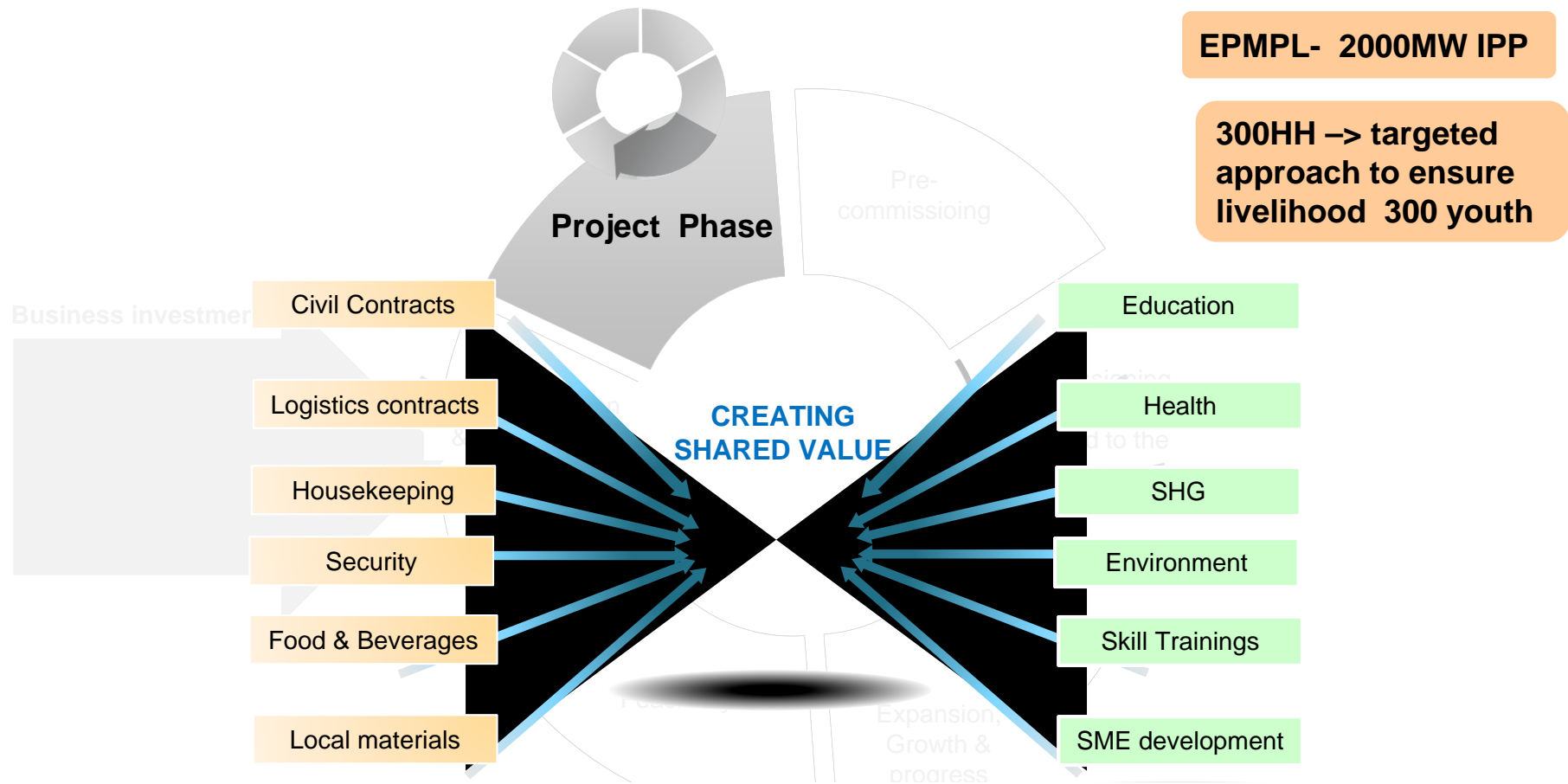
---

- Business at present is **biggest entity ever**, in history of mankind.
- This gives an opportunity to **rejuvenate thinking** about the role of business in society.
- Shared value symbolises a new sect within business fraternity whose testaments are based on **far broader approaches** than economic value creation.
- Shared value approach has potential to bring more harmony within Govt, NGOs and business to strive towards **Socialistic Capitalism (Narrowing Gap)**



- Importance of Business is now valued more on its **proportionality of profit sharing** than just earning profits.

# Shared Value as Embedded in Business



- ✓ **13 Worker's Cooperative societies** having 309 youths
- ✓ Contracts worth **5.5 Mn USD** awarded locally
- ✓ **25%** local labour mandatory for contractors
- ✓ Advance **Training** for heavy vehicle training, Welding, Masonry

- ✓ 1250 Students in School (2 tribal girls got distinction)
- ✓ 24x7 Health Care Facility
- ✓ Child Care program
- ✓ 30 Youth trained in bag and garment making
- ✓ **Fly Ash training under progress for SME**
- ✓ HSE Volunteers



## Shared Value in an External Dimension

---



- Entrepreneurship is one major focus area of intervention, which triggers cascading economic impact.
- Impetus on enhancing well-being of communities through multitude thematic programs comprising:
  - Health
  - Education
  - Civic infrastructure including water & sanitation provision
  - Sports

---

Watch her story and more on award-winning short film: [Growth in Unison](#)

## Impact of Shared Value- Equity and Equality

---

- **Enhanced incomes** has helped in **checking distress migration** along with **improving socio-economic indicators**.
  - **Income-generation** activities among **women** in **collective mode** has resulted in a **combined and increased bargaining power**.
  - **Improved** access to **healthcare** has ensured **better well-being** and **saved lives and costs** in critical cases.
  - Support for **education** has enabled students to **continue studies** and opened doors towards a **secure future**.
  - **Better infrastructure** facilitating **local development** and lower migration.
  - **Support to sports** leading to opportunities for **alternate career avenue** along with aiding in **team spirit** and **checking delinquency**.
-



# Expanding the Horizons of Shared Value

- Building through leadership through “Knowledge Series”
- 19 such discussions arranged - TOI, JSI, Acumen, ISB, IIMA, SHIFT etc. have contributed
- Focus on contemporary topics and knowledge building and knowledge creation among industry leaders and CSR practitioners





*Thank You*

[www.essarfoundation.com](http://www.essarfoundation.com)

